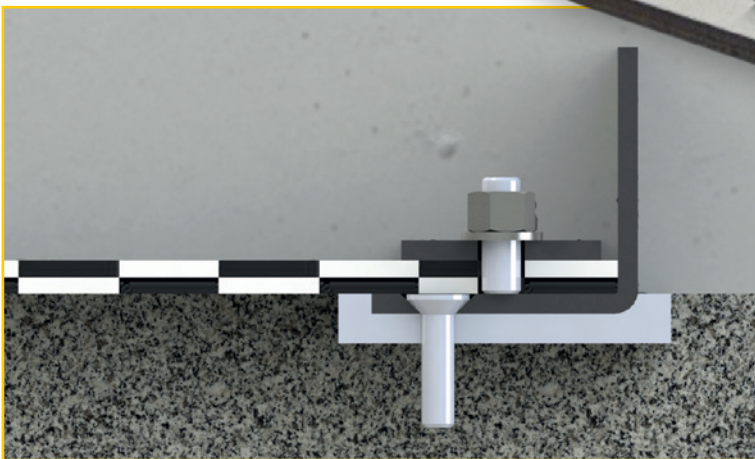
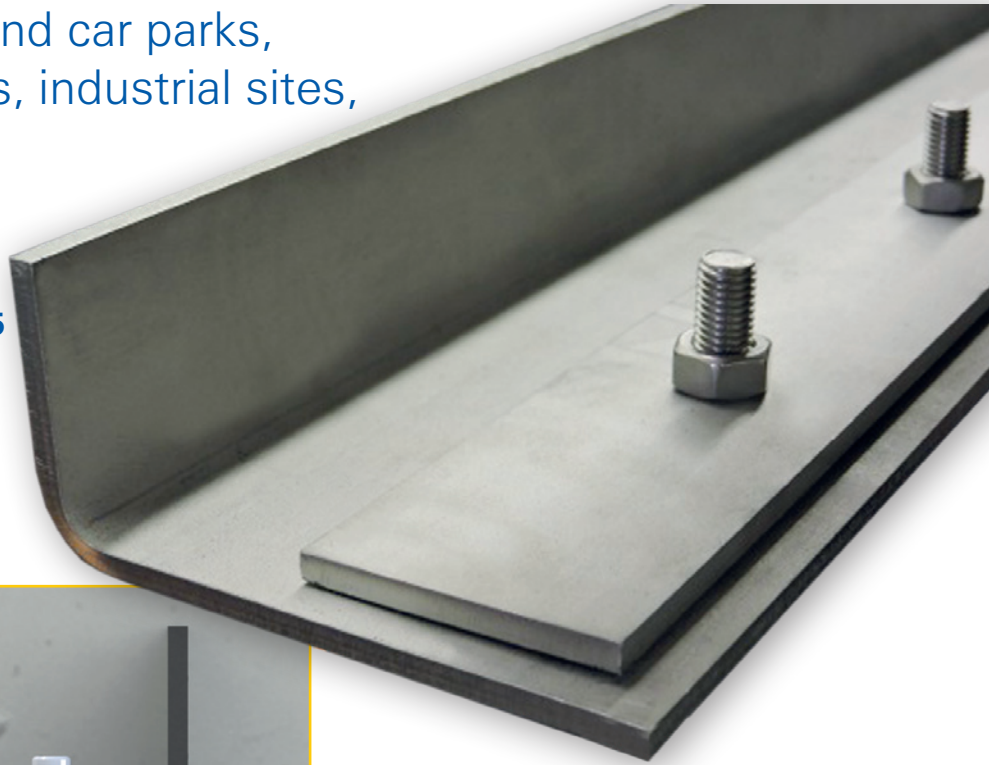


MVH type **LFW**

Angle structures for the separation of flooring in underground car parks, multi-storey car parks, industrial sites, ramps etc.

MVH Loose/fixed flange angles according to DIN 18195



System Features

Material:	steel, hot galvanised, stainless steel: V2A (1.4301), v4A (1.4571, 1.4404)
Material thickness:	according to DIN 18195 T9 = 6 mm or to specification (e.g. 8 mm)
Length of segments:	3,000 mm. Fitting pieces, special lengths and corner formations and T-pieces possible
Flange version:	loose/fixed flange according to DIN 18195 Part 9 with threaded bolt M 12x35 with nuts, spacing 150 mm
Accessories:	screw anchors or percussion dowels

On request you can also be supplied with angle structures for separating flooring in an adhesive flange version in all material thicknesses and side lengths. Installation should always take place on a mortar bed constructed by the customer.