

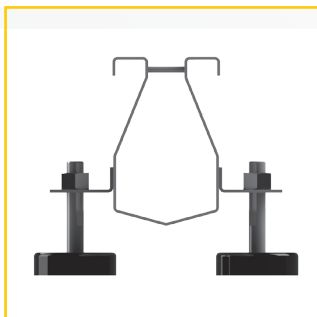
## Slotted channels

### Water drainage technology for swimming pools and sanitation areas

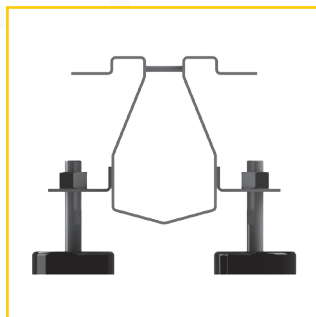
Our MVH slotted channels are primarily installed in applications with limited water drainage volumes and reduced contaminant particle content. They are also used as safety channels in front of doors to prevent water from entering adjacent rooms. Since only the wrap-around raised steps and the water drainage slot are visible in the installed condition, the MVH slotted channel is an unobtrusive water drainage system that can also be used as a design element. The 8mm width of the water inlet slots supports use in barefoot zones. The channel is connected to the pipe assembly with user-defined drainage points using drainage boxes and floor drains with odor trap and dirt collector. The drainage boxes are covered with MVH plastic grates in standard colors white, gray, yellow, or beige. By using stainless steel grades V2A (1.4301) and V4A (1.4571), MVH channels are resistant to exposure to chlorine or cleaning agents. Even applications in brine pools are possible by using special-purpose materials such as grade 1.4539 material. Pickling in dip tanks creates a uniform, smooth finish that prevents bonding of contaminant particles. Cleaning the channels and drains is also simplified.



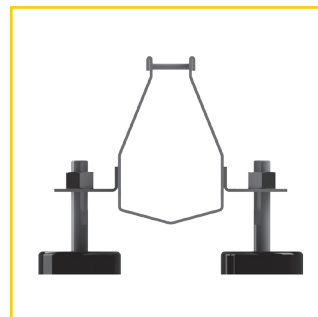
### Channel profiles



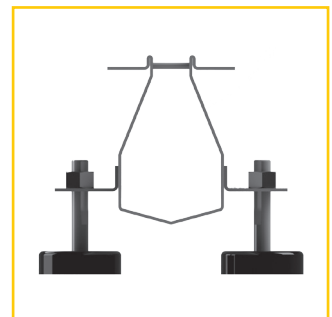
**S1.1**  
Slotted channel with wrap-around raised step



**S1.2**  
Slotted channel with wrap-around thin substrate flange and raised step



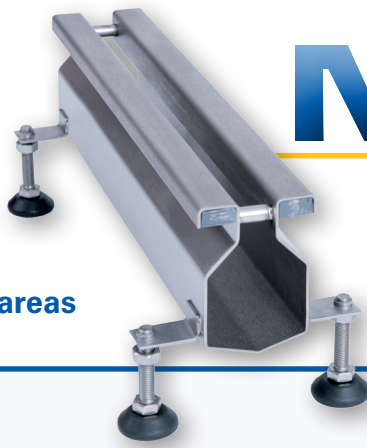
**S2.1**  
Slotted channel with crimped top edge



**S2.2**  
Slotted channel with wrap-around thin substrate flange and crimped top edge

## Slotted channels

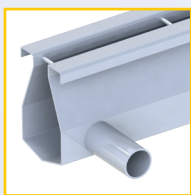
Water drainage technology for swimming pools and sanitation areas



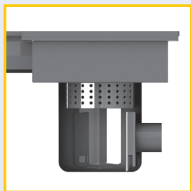
### System features

- Material:** Stainless steel, grade V2A (1.4301), V4A grades 1.4571 or 1.4404 are available for elevated requirements due to exposure to acids, alkalines, chlorides, etc.
- Material thickness:** standard 1.5 mm, greater material thicknesses possible
- Installed height:** 60 max. 180 mm (boxed-in intrinsic grade)
- Finishes:** pickled in dip tanks, bead blasting and electrolytic polishing on request
- Slot width:** 8 mm for barefoot zones
- Channel lengths:** standard 3,000 mm, cut-to-length sections and custom lengths up to 6,000 mm possible
- Intrinsic grade:** slotted channels with boxed-in grade to the drains, depending on generated water volumes and grade conditions in the room to be drained

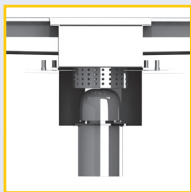
#### Connection options:



integrated drain spouts DN 70 or DN 100, not incl. odor trap with vertical or horizontal orientation, other spout diameters on request.

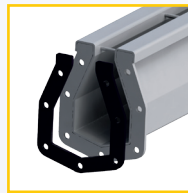


Drainage boxes 300 x 300 mm with integrated, single-piece floor drains DN 70 and DN 100 with removable odor trap and dirt collector, see floor drain section for more information



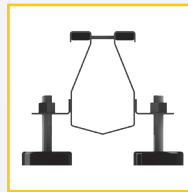
Drainage boxes 300 x 300 with integrated, two-piece floor drains DN 70 and DN 100 with adhesive flange or compression seal flange to connect the seal, floor drains with removable odor trap and dirt collector, see floor drain section for more information

#### Connection elements



Adapter flange with screws and gasket; our partner contractors can also butt-weld the channels at the construction site

#### Lining for exposed steps:

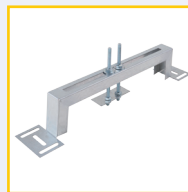


The wrap-around exposed steps are lined with factory-installed PVC profiles or alternatively with solid stainless steel; this allows MVH slotted channels to be lined/cast without cavities.

#### Assembly systems:



for installing before concrete is poured or the floor screed is applied by using MVH adjustable supports with threaded rods for continuously adjustable height



on existing joints with MVH installation aids

#### Covers for drainage boxes



MVH plastic grates in rigid version. 8 mm rod spacing for barefoot zones. Non-slip grates available in standard colors white, gray, yellow, or beige.

