

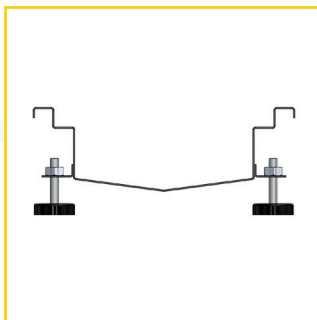
Box channels

Water drainage technology for swimming pools and sanitation areas

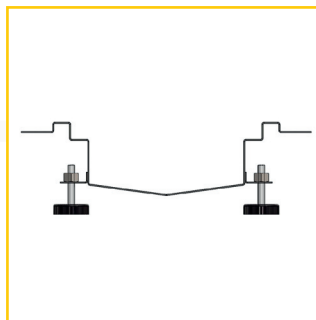
Due to their large inlet cross-sections, MVH box channels are used in swimming pools and shower areas and as overflow channels in the pool area but also in tiled areas to absorb drip and cleaning water. By using stainless steel grades V2A (1.4301) and V4A (1.4571), MVH channels are resistant to exposure to chlorine or cleaning agents. Even applications in brine pools are possible by using special-purpose materials such as grade 1.4539 material. Pickling in dip tanks creates a uniform, smooth finish that prevents bonding of contaminant particles. Cleaning the channels and drains is also simplified. The design of the box channel and the wide range of channel profiles allows the matching MVH channel to be found for any installation situation. This also applies to MVH plastic grates, which are appropriate for barefoot zones due to the 8 mm rod spacing. The ability to combine box channels with drain flanges or MVH floor drains allows a water drainage system to be created that ideally matches your requirements. Do not hesitate to contact us. Our field sales staff is delighted to advise you.



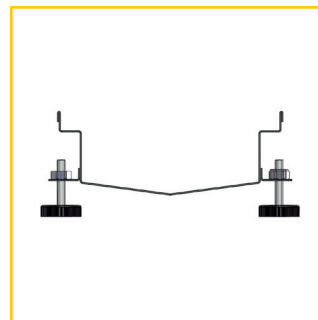
Channel profiles



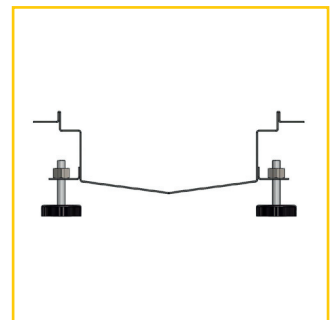
K1.1
Box channel with wrap-around raised step



K1.2
Box channel with wrap-around raised step and thin substrate flange



K2.1
Box channel with crimped top edge



K2.2
Box channel with crimped top edge and wrap-around thin bed flange

Box channels

Water drainage technology for swimming pools and sanitation areas



System features

Material: Stainless steel, grade V2A (1.4301), V4A grades 1.4571 or 1.4404 are available for elevated requirements due to exposure to acids, alkalines, chlorides, etc.

Material thickness: standard 1.5 mm, greater material thicknesses possible

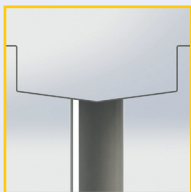
Finishes: pickled in dip tanks, bead blasting and electrolytic polishing on request

Channel lengths: standard 3,000 mm, cut-to-length sections and custom lengths up to 6,000 mm possible

Channel widths: all widths, starting at 150 mm; available based on hydraulic requirements

Intrinsic grade: box channels with boxed-in grade to the drains, depending on generated water volumes and grade conditions in the room to be drained

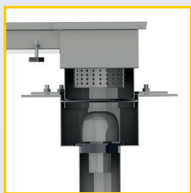
Connection options:



integrated drain spouts DN 70 or DN 100, not incl. odor trap with vertical or horizontal orientation, other spout diameters on request.

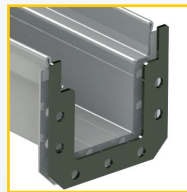


Integrated, single-piece floor drains DN 70 and DN 100 with removable odor trap and dirt collector, see floor drain section for more information



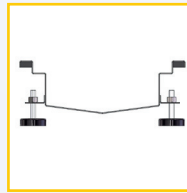
Integrated, two-piece floor drains DN 70 and DN 100 with adhesive flange or compression seal flange to connect the seal, floor drains with removable odor trap and dirt collector, see floor drain section for more information

Connection elements



Adapter flange with screws and gasket; our partner contractors can also butt-weld the channels at the construction site

Raised step liner:

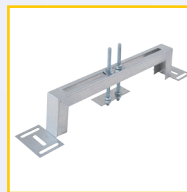


the wrap-around raised steps are lined with factory-installed PVC profiles or alternatively with solid stainless steel; this allows MVH boxed channels to be lined/cast without cavities.

Assembly systems:



for installing before concrete is poured or the floor screed is applied by using MVH adjustable supports with threaded rods for continuously adjustable height



on existing joints with MVH installation aids

Covers:



MVH plastic grates in roll-up or rigid versions. 8 mm rod spacing for barefoot zones. Non-slip grates available in standard colors white, gray, yellow, or beige.

