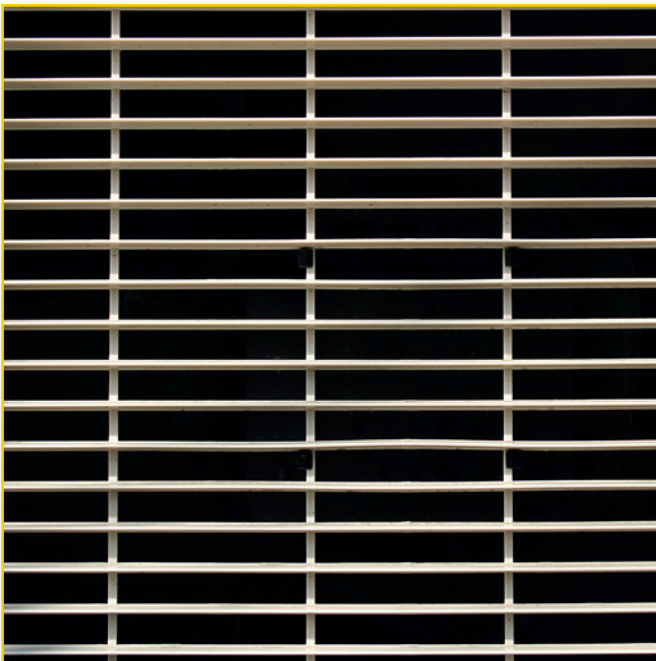


MVH cover variants and locking possibilities

cover variants

The MVH drains and trough systems can be covered safely and clatter-free with the following covers and can be screw-connected to them. The covers are rated for the loads occurring.



Gratings:

Mesh widths:
30/10 as the standard
30/30 mm for applications with higher hydraulic requirements (e.g. non-roofed-over underground car park ramp).

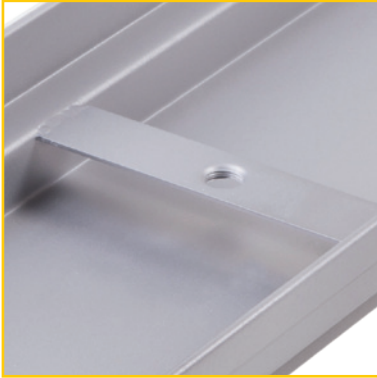
Larger mesh widths possible on request.



Chequer plate:

Solid covers made of chequer plate with welded-on support beams via which the loads occurring are safely absorbed. The chequer plate has an all-round water inlet slit, but it can also be supplied completely closed and possibly with seals.

Locking possibilities



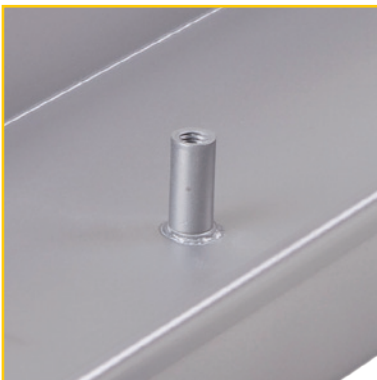
MVH centre web screw connection

The MVH centre web screw connection is welded on transverse to the water flow direction on the grating support of the trough. As the standard the covers are locked twice per metre with this variant. 4 screw-connection webs per metre or more are likewise possible on request.



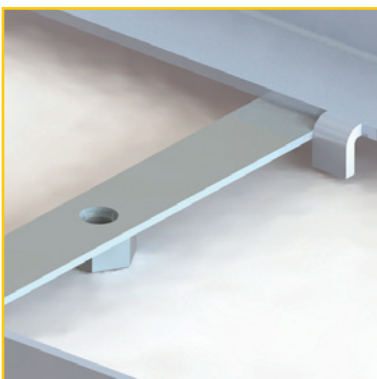
MVH centre screw connection in the grating support

In the case of the screw connection in the grating support of the trough per metre run of the trough 4 M12 threaded bolts are welded to the grating support. The cover is then securely screwed in place with threaded nuts. This variant of the locking system is ideally suited to application on underground car park ramps as, due to the four-fold screw connection, the grates are locked in a manner safe for traffic despite the thrust and shear forces occurring.



MVH threaded sleeve

The screw connection of the covers with the help of a threaded sleeve welded on centrally in the water course makes it possible to configure very flat trough systems as hence the grating support can be dispensed with. The gratings are then supplied as an elevated variant with a higher edge bar.



MVH fast locking system

The MVH fast locking system is particularly suitable for frame structures. Via a screw connection rotary handle that can be turned in the water course and which is fastened in place below the cover the locking system can be released quickly. This is particularly advantageous for applications with a high frequency of cleaning.