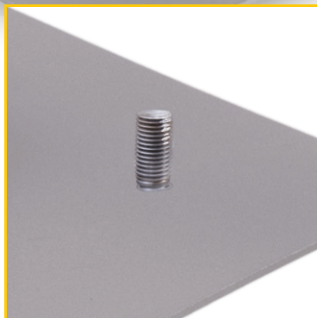
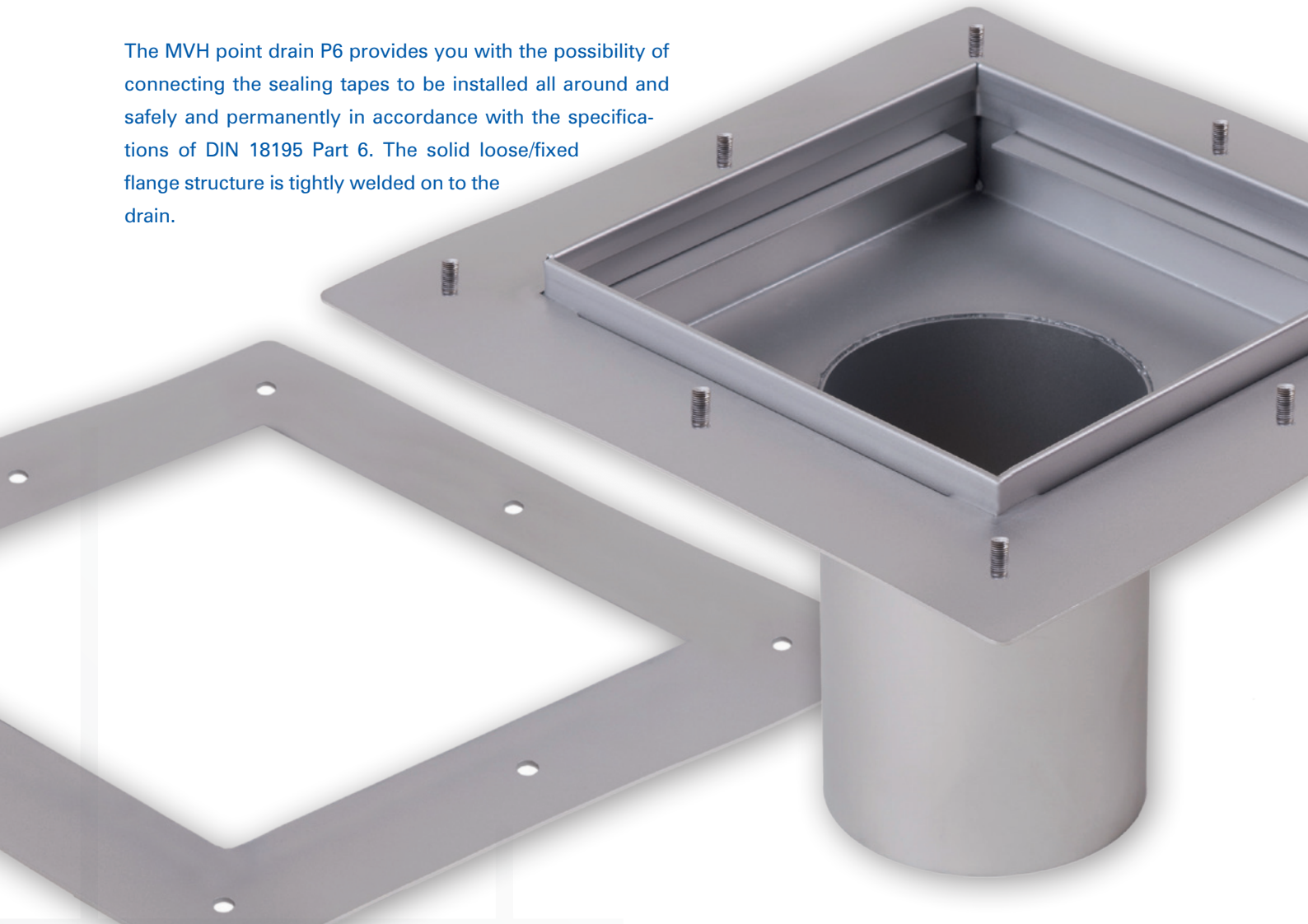


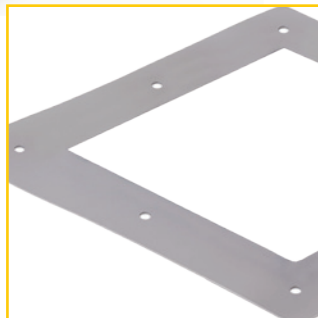
## MVH point drain **P6** with loose/fixed flange

according to DIN 18195 Part 6

The MVH point drain P6 provides you with the possibility of connecting the sealing tapes to be installed all around and safely and permanently in accordance with the specifications of DIN 18195 Part 6. The solid loose/fixed flange structure is tightly welded on to the drain.



8 screw connection points for traffic-safe screw connection of the covers according to class C250.



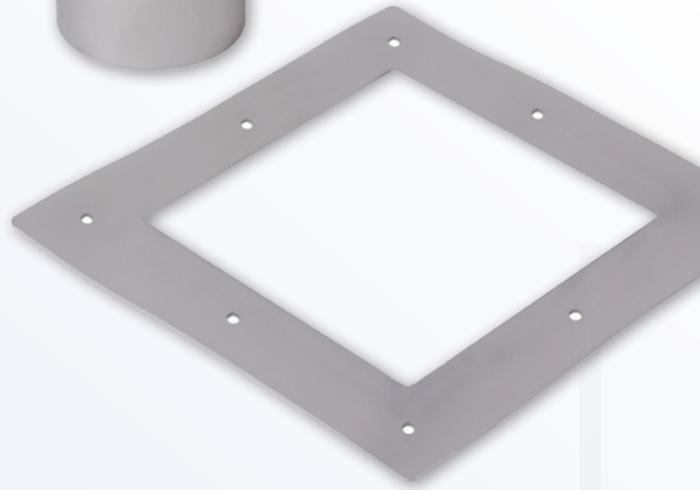
Loose/fixed flange all around, material thickness 6 mm. Solid threaded bolts M12 with a spacing of 150 mm ensure safe and reliable compression of the gasket sheet with the help of the 60 mm wide loose flange.



Drainage nozzle vertical / horizontal. DN 70/DN 100. Length corresponding to the thickness of the roof of the underground car park.

# MVH point drain **P6** with loose/fixed flange

according to DIN 18195 Part 6



## System features

- Material:** Stainless steel V4A, materials 1.4571 or 1.4404
- Material thickness:** Drain 2 mm.  
Loose/fixed flange 6 mm
- Surface finish:** Pickled in immersion bath. Sand blasting and electrolytic polishing on request.
- Outer dimensions:** 200 x 200 mm, 300 x 300 mm.  
Special dimensions possible on request
- Connection possibility:** Drainage nozzle DN 70 or DN 100.  
Vertical or horizontal.
- Covers:** Standard grating mesh width 30/10, screw connected safe for traffic.  
Other mesh widths possible.

### Type P6

Drain bottom part, outer dimensions 200 x 200 mm	Article No. 11061001
Grating MW 30/10, length 185 x 185 mm	Article No. 11086001
Drainage nozzle, DN 100	Article No. 17006050
Drainage nozzle, DN 70	Article No. 17006051
Drain bottom part, outer dimensions 300 x 300 mm	Article No. 11061002
Grating MW 30/10, length 285x285 mm	Article No. 11086002
Drainage nozzle DN 100	Article No. 17005050
Drainage nozzle DN 70	Article No. 17006051