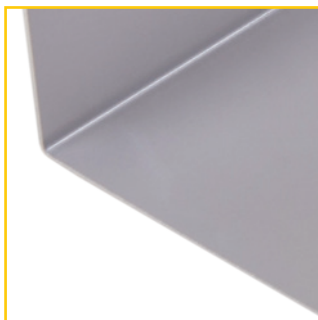
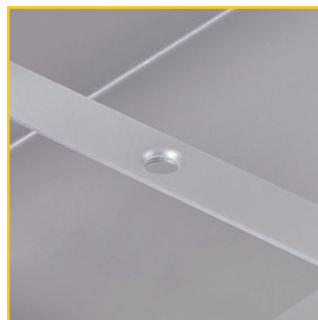


MVH trough system **P5** with sealing-on web for underground car park coating

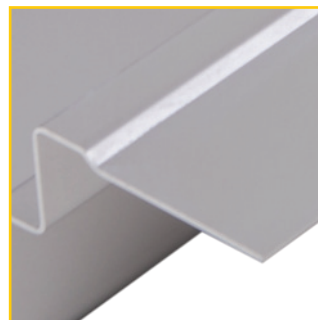
The reliable connection of the underground car park coating to the trough system is one of the main criteria for the avoidance of damage to the building fabric by chlorides penetrating into the concrete. The MVH trough P5 provides this possibility by means of an all-round 50 mm wide sealing-on web. The height of the web depends on the thickness of the coating applied. A special adhesive system developed by MVH GmbH produces, by means of a rough surface, optimum hold of the coating on the stainless steel sealing web.



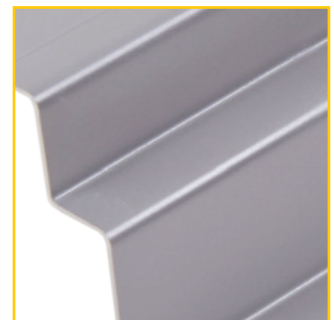
Variable material thickness in the 2 mm standard. Higher material thickness possible.



2 or 4 screw connection points per metre run of the trough for traffic-safe screw connection of the covers according to class C250



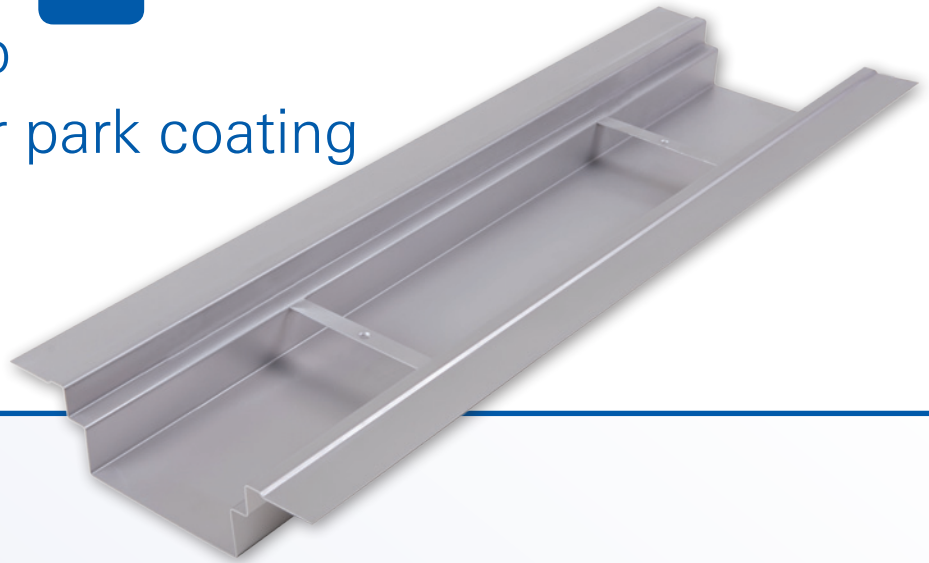
All-round sealing-on web, web width in the 50 mm standard. Further widths possible. Standard height 3 mm. Adjustment to coating thickness possible.



Through chamfered grate supporting area. Reliable support, no clattering of the covers.

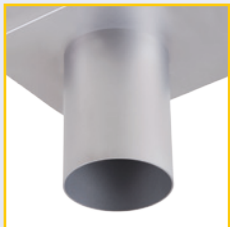
MVH trough system with sealing-on web for underground car park coating

P5



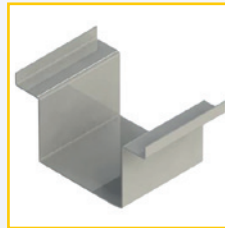
System features

- Material:** Stainless steel V4A, materials 1.4571 or 1.4404.
- Material thickness:** Standard 2 mm. Higher material thicknesses possible on request
- Surface finish:** Pickled in immersion bath. Sand blasting and electrolytic polishing on request.
- Trough lengths:** 1,000 mm, 3,000 mm, fitting pieces as well as special lengths according to measuring-up
- Trough widths:** Standard 150 mm. However, all widths can be supplied depending on hydraulic requirement.
- Connection possibility:** Drainage nozzle DN 70 or DN 100. Alternatively connection to a pump sump.



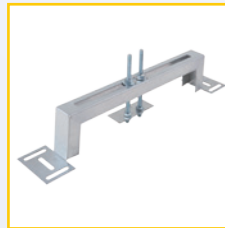
- Covers:** Standard grating mesh width 30/10, screw connected safe for traffic. Other mesh widths possible.

- Connection elements:** Connection shoes for sealing provided by the customer with suitable sealing material.



- Welding together of the trough joints on the construction site by our partner companies.

Installation systems:



- In the case of existing recesses MVH installation assistance.



- In the case of assembly before the concreting process, MVH adjustable feet with threaded bars for infinitely variable height adjustment.

Type P5

Trough bottom part, length 1,000 mm	Article No. 11051001
Trough bottom part, length 3,000 mm	Article No. 11051002
Grating MW 30/10, length 500 mm	Article No. 11085002
Grating MW 30/10, length 1,000 mm	Article No. 11085001
Front wall (tightly welded on)	Article No. 17005001
Drainage nozzle DN 100	Article No. 17005050
Drainage nozzle DN 70	Article No. 17005051
Connection shoe	Article No. 17005080