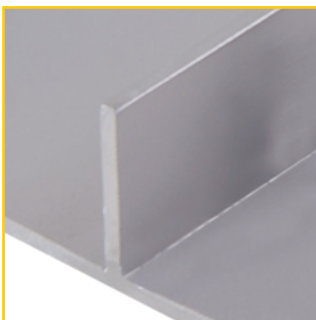
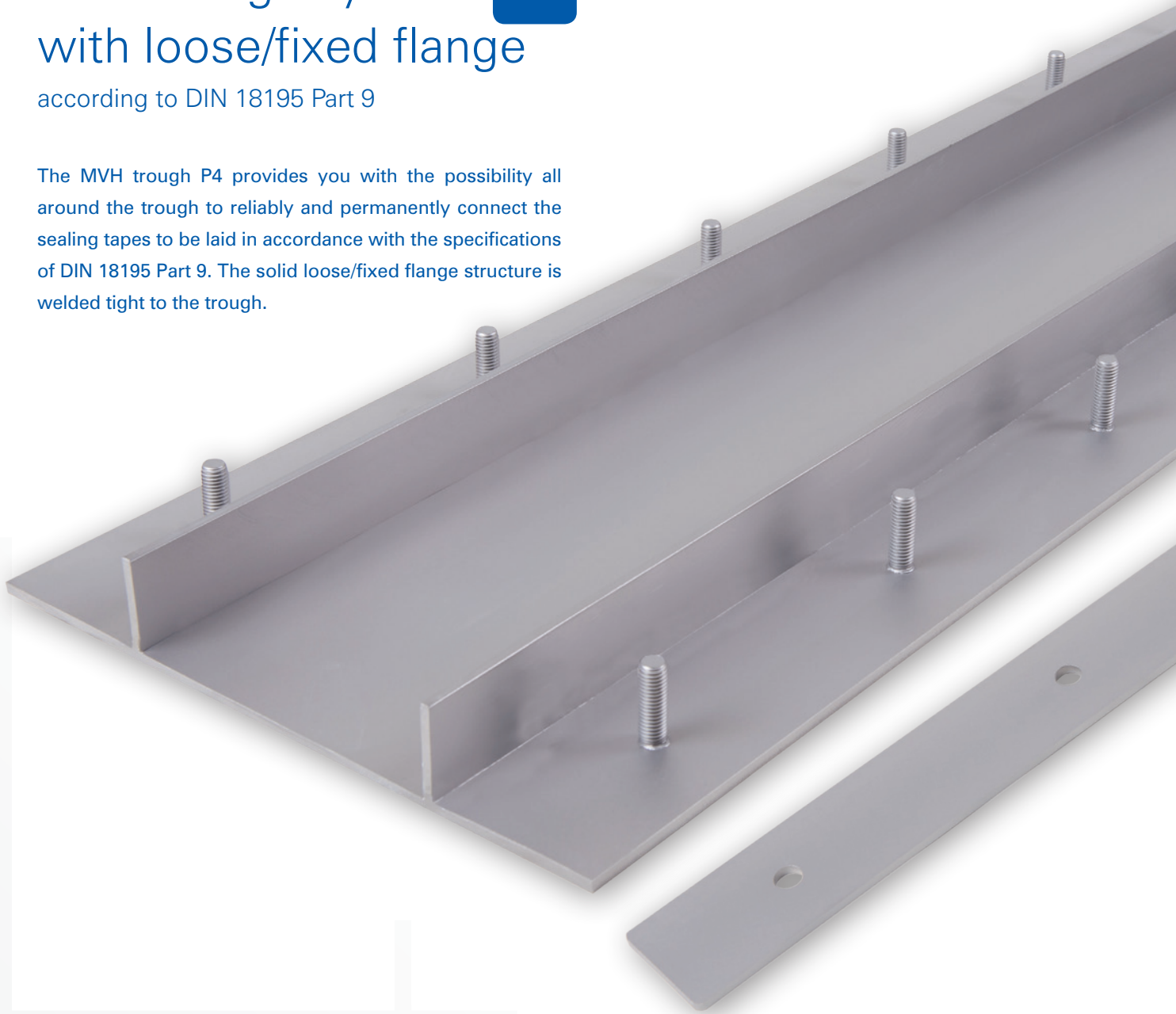


# MVH trough system **P4** with loose/fixed flange

according to DIN 18195 Part 9

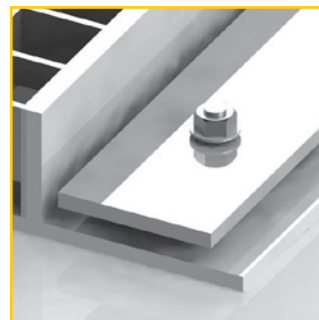
The MVH trough P4 provides you with the possibility all around the trough to reliably and permanently connect the sealing tapes to be laid in accordance with the specifications of DIN 18195 Part 9. The solid loose/fixed flange structure is welded tight to the trough.



Material thickness in the 4 mm standard for extreme stability under high loads. Larger material thickness up to 6 mm possible.



2 screw connection points per metre run of trough for screw connection, safe for traffic, of the covers according to class C250.



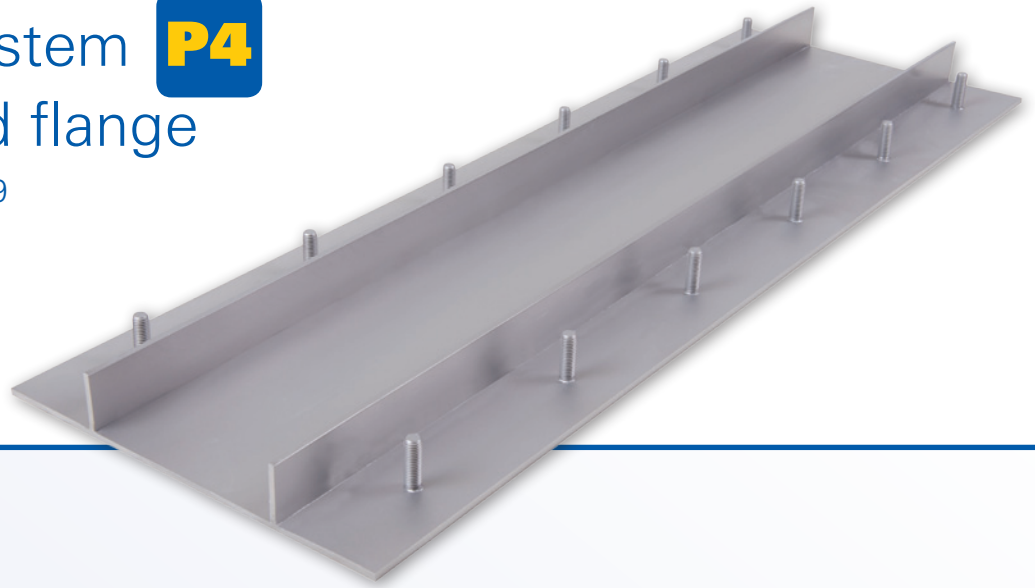
Loose/fixed flange all around, material thickness 6 mm. Solid threaded bolts M12 with spacing of 150 mm ensure a reliable compression of the gasket sheet with the help of the 60 mm wide loose flange.



Low overall height in standard 55 mm. Other overall heights possible.

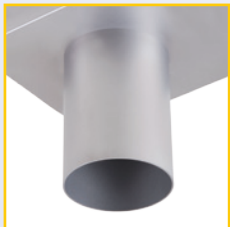
## MVH trough system **P4** with loose/fixed flange

according to DIN 18195 Part 9



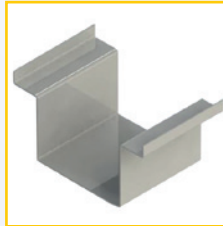
### System features

- Material:** Stainless steel V4A, materials 1.4571 or 1.4404
- Material thickness:** Standard 4 mm.  
Larger material thicknesses possible on request
- Surface finish:** Pickled in immersion bath. Sand blasting and electrolytic polishing on request.
- Trough lengths:** 1,000 mm, 3,000 mm, fitting pieces as well as special lengths according to measuring-up
- Trough widths:** Standard 150 mm. However, all widths can be supplied depending on hydraulic requirement.
- Connection possibility:** Drainage nozzle DN 70 or DN 100. Alternatively connection to a pump sump.



- Covers:** Standard grating mesh width 30/10, screw connected safe for traffic. Other mesh widths possible.

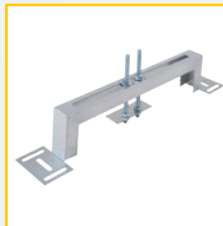
#### Connection elements:



Connection shoes for sealing provided by the customer with suitable sealing material.

Welding together of the trough joints on the construction site by our partner companies.

#### Installation systems:



In the case of existing recesses MVH installation assistance.



In the case of assembly before the concreting process, MVH adjustable feet with threaded bars for infinitely variable height adjustment.

#### Type P4

Trough bottom part, length 1,000 mm	Article No. 11041001
Trough bottom part, length 3,000 mm	Article No. 11041002
Grating MW 30/10, length 500 mm	Article No. 11084002
Grating MW 30/10, length 1,000 mm	Article No. 11084001
Front wall (tightly welded on)	Article No. 17004001
Drainage nozzle DN 100	Article No. 17004050
Drainage nozzle DN 70	Article No. 17004051
Connection shoe	Article No. 17004081
Pair of flanges (incl. gasket)	Article No. 17004081