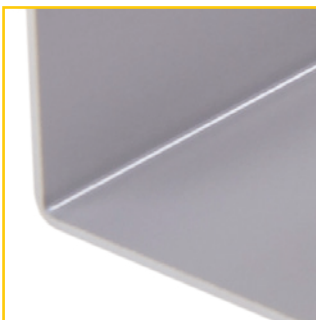


MVH trough type **P3** for low floor superstructures

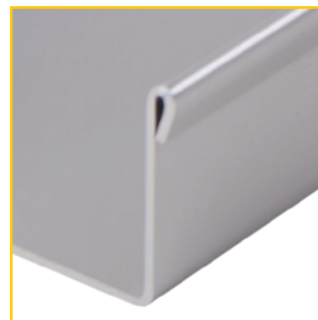
In underground car parks and multi-storey car parks, for the installation of the drainage system the existing floor superstructure is often very low. With the P3 trough MVH GmbH offers you an extremely flat trough system. The smallest trough that can be supplied has an overall height of only 30 mm. Our standard trough is 50 mm high. By means of the widening of the water course if required we reach a higher drainage cross-section. Hence this flat trough also quickly and reliably absorbs the water quantities occurring. If possible, by the installation of additional drainage nozzles a further increase in the drainage capacity can be achieved.



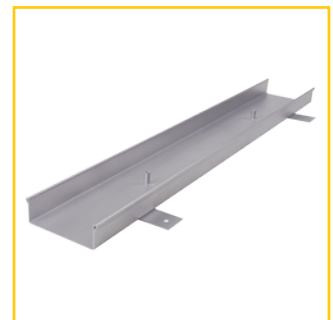
Material thickness in the 2 mm standard for extreme stability under high loads. Larger material thickness up to 5 mm possible.



2 screw connection points per metre run of trough for screw connection, safe for traffic, of the covers according to class C250.

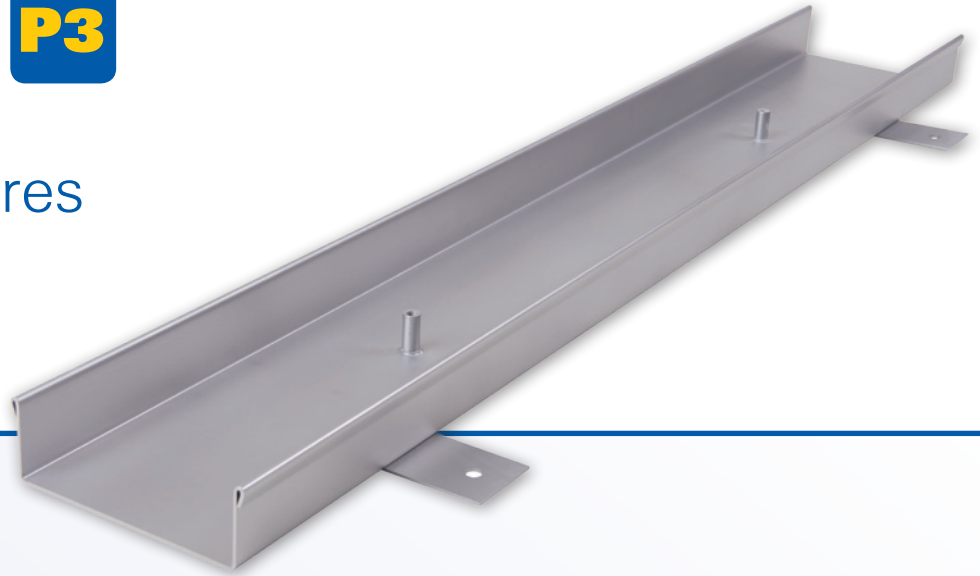


Crimped edge with a material thickness of 2mm in order to increase stability



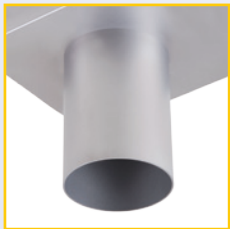
Low overall height in standard 50 mm. Lower overall heights possible.

MVH trough type **P3** for low floor superstructures



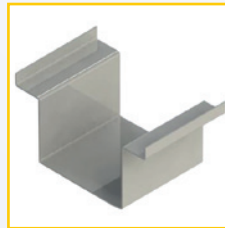
System features

- Material:** Stainless steel V4A, materials 1.4571
- Materialstärke:** Standard 2 mm.
Larger material thicknesses possible on request
- Surface finish:** Pickled in immersion bath. Sand blasting and electrolytic polishing on request.
- Trough lengths:** 1,000 mm, 3,000 mm, fitting pieces as well as special lengths according to measuring-up
- Trough widths:** Standard 150 mm. However, all widths can be supplied depending on hydraulic requirement.
- Connection possibility:** Drainage nozzle DN 70 or DN 100. Alternatively connection to a pump sump.



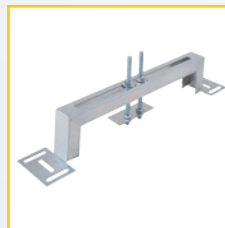
- Covers:** Standard grating mesh width 30/10, screw connected safe for traffic. Other mesh widths possible.

Connection elements:



Connection shoes for sealing provided by the customer with suitable sealing material.

Installation systems:



In the case of existing recesses, MVH installation assistance.



In the case of assembly before the concreting process, MVH adjustable feet with threaded bars for infinitely variable height adjustment .

Type P3

Trough bottom part, length 1,000 mm	Article No. 11031001
Trough bottom part, length 3,000 mm	Article No. 11031002
Grating MW 30/10, length 500 mm	Article No. 11083002
Grating MW 30/10, length 1,000 mm	Article No. 11083001
Front wall (tightly welded on)	Article No. 17003001
Drainage nozzle DN 100	Article No. 17003050
Drainage nozzle DN 70	Article No. 17003051
Connection shoe	Article No. 17003081
Pair of flanges (incl. seal)	Article No. 17003081