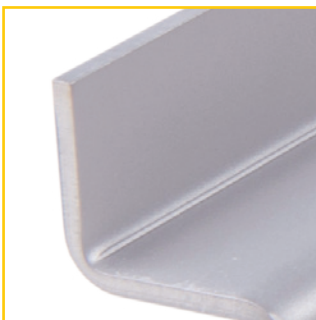


# MVH trough type **P2** for installation on entry ramps

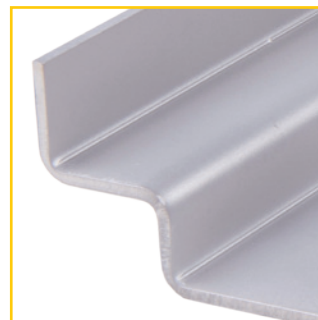
The installation situations at the entry and exit ramps make very high demands on the drainage system. The thrust and shear forces occurring due to travelling and braking motor vehicles have to be absorbed by the drainage trough. MVH provides, with the P2 trough, due to the high material thicknesses and the secure incorporation into the concrete, the ideal trough for this application. The outside width of 300 mm and the grating with the mesh width 30/30 provide an optimum drainage cross-section. For a non-roofed-over ramp unit both the trough width and the trough height can be increased. The MVH trough hence withstands very large water quantities.



Material thickness in the 3 mm standard for extreme stability under high loads. Larger material thickness up to 6 mm possible.



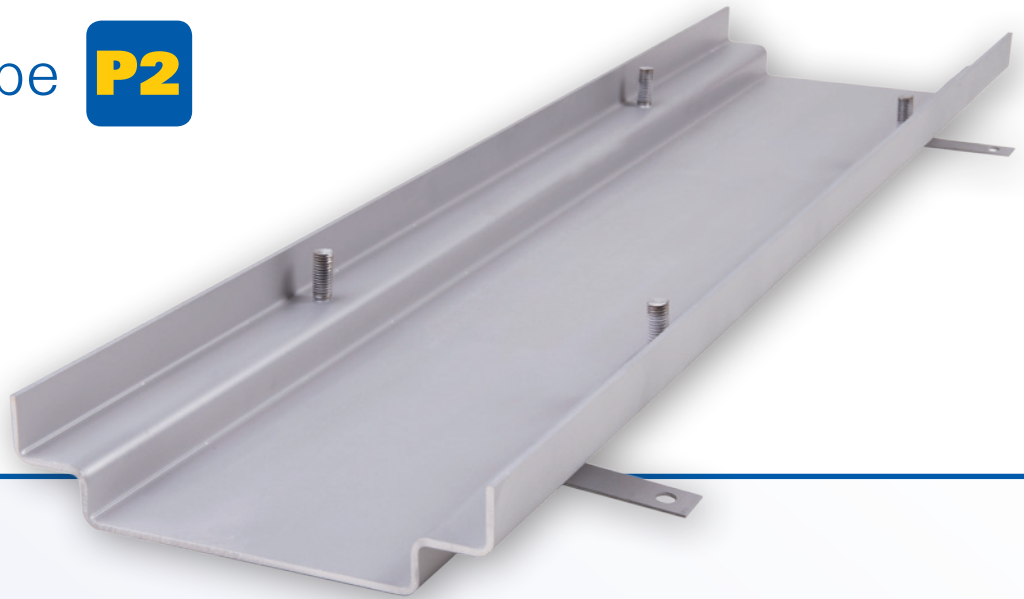
4 screw connection points per metre run of trough for screw connection, safe for traffic, of the covers according to class C250.



Through chamfered grate support. Secure support, no clattering of the covers.

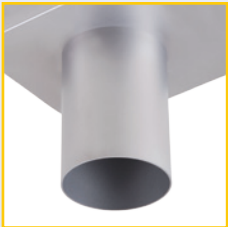
## MVH trough type P2 for installation on entry ramps

**P2**



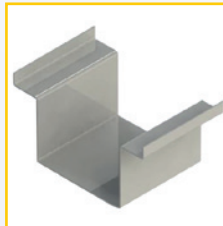
### System features

- Material:** Stainless steel V4A, materials 1.4571 or 1.4404
- Material thickness:** Standard 3 mm. Higher material thicknesses possible on request .
- Surface finish:** Pickled in immersion bath. Sand blasting and electrolytic polishing on request.
- Trough lengths:** 1,000 mm, 3,000 mm, fitting pieces as well as special lengths according to measuring-up.
- Trough widths:** Standard 300 mm. However, all widths can be supplied depending on hydraulic requirement.
- Connection possibility:** Drainage nozzle DN 70 or DN 100. Alternatively connection to a pump sump.

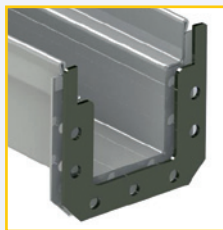


- Covers:** Standard grating mesh width 30/10, screw connected safe for traffic. Other mesh widths possible.

#### Connection elements:



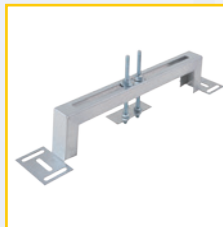
Connection shoes for sealing provided by the customer with suitable sealing material.



Connection flange with screws and chloride-resistant gasket.

Welding together of the trough joints on the construction site by our partner companies.

#### Installation systems:



In the case of existing recesses, MVH installation assistance.



In the case of assembly before the concreting process, MVH adjustable feet with threaded bars for infinitely variable height adjustment.

#### Type P2

Trough bottom part, length 1,000 mm	Article No. 11021001
Trough bottom part, length 3,000 mm	Article No. 11021002
Grating MW 30/10, length 500 mm	Article No. 11082002
Grating MW 30/10, length 1,000 mm	Article No. 11082001
Front wall (tightly welded on)	Article No. 17002001
Drainage nozzle DN 100	Article No. 17002050
Drainage nozzle DN 70	Article No. 17002051
Connection shoe	Article No. 17002080
Pair of flanges (incl. gasket)	Article No. 17002081