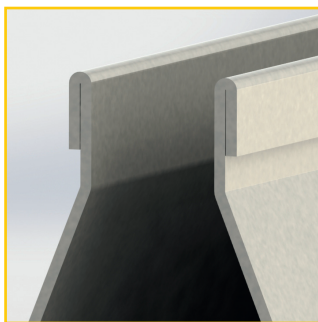


Type **IS** industrial slotted channel

High-strength, heavy-duty slotted channel system for areas with low water volumes

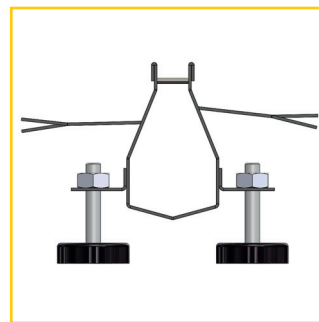
When using water drainage systems in industrial applications, e.g. in shop floors or warehouse buildings, resistance to chemicals, oils, or cleaning agents is essential. Our MVH industrial slotted channels (Type IS) are exclusively made with premium stainless steels in grades V2A or V4A. Since these areas see high loads, e.g. due to forklift traffic on the travel surfaces and therefore also on the installed channel systems, we designed the MVH industrial slotted channel (Type IS) as a heavy-duty channel that easily meets these requirements.



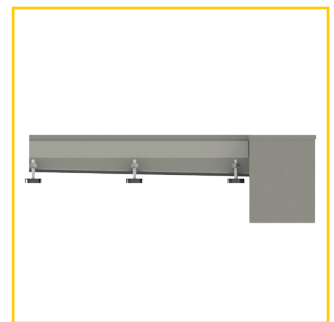
The channel has a crimped top edge for increased strength.



Heavy-duty spacers in the water inlet slot



Laterally welded wall anchors for proper connection into concrete



Intrinsic grade for proper water drainage

Type **IS**

industrial slotted channel



MVH GmbH

System features

Material: Stainless steel grades V2A (1.4301), V4A (1.4571 or 1.4404) and custom materials such as 1.4539 on request

Material thickness: 2 mm

Installed height: min. 60 mm, max. 180 mm

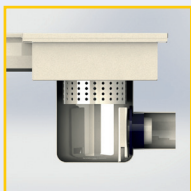
Finishes: pickled in dip tanks

Slot width: 18 mm, other slot widths available on request.

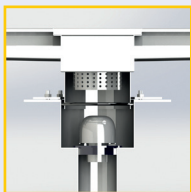
Channel lengths: Overall lengths of channels based on requirements; individual section lengths: 3,000 mm.

Intrinsic grade: slotted channels with boxed-in grade to the drains, depending on generated water volumes and grade conditions in the room to be drained

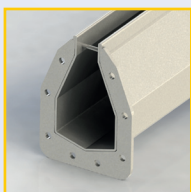
Connection options:



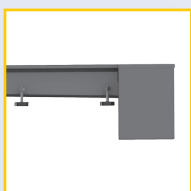
integrated floor drains DN 70 or DN 100, with removable odor trap and dirt collector, see floor drain section for more information



Integrated, two-piece floor drains DN 70 and DN 100 with adhesive flange or compression seal flange to connect the seal, floor drains with removable odor trap and dirt collector, see floor drain section for more information

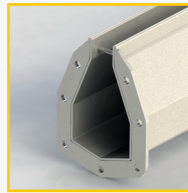


The slotted channel is connected to a pump sump at the installation site with an open front face with adapter flange;



on MVH pump sumps, the box channel is welded directly to the pump sump

Connection elements:

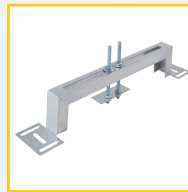


Adapter flange with screws and gasket; our partner contractors can also butt-weld the channels at the construction site

Assembly systems:

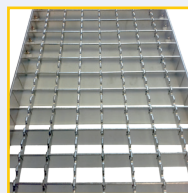


for installing before concrete is poured or the floor screed is applied by using MVH adjustable supports with threaded rods for continuously adjustable height



on existing joints with MVH installation aids

Covers for drainage boxes:



Grates with different mesh sizes and load classes



solid rod grates 20/8 mm for very high loads



FGC grates made from fiberglass-reinforced plastics - heavy-duty and durable System features