

## MVH trough type **P1** for installation in the underground car park area

Our trough type P1 is a sophisticated, stable and yet favourably priced drainage system. Also relatively long trough strands can be installed easily and safely. In this case it does not matter whether the troughs are placed in an existing recess or are to be grouted into the concrete after the completion of assembly.



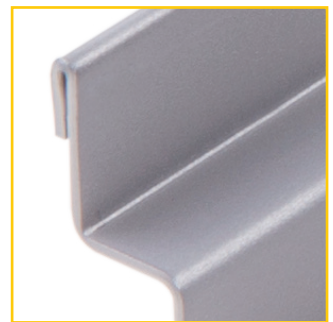
Crimped edge for increased stability and drive-over capability



Tightly welded-in drain nozzles DN70 / DN100. Length corresponds to the thickness of the underground car park ceiling / floor



Two screw-connection points per metre trough for traffic-safe screw connection of the covers according to class C250



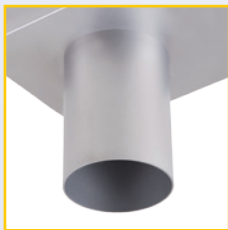
Through chamfered grate supporting area. Reliable support, no clattering of the covers.

## MVH trough type **P1** for installation in the underground car park area



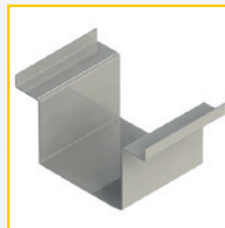
### System features

- Material:** Stainless steel V4A, materials 1.4571 or 1.4404
- Material thickness:** Standard 1.5 mm. Higher material thicknesses possible on request
- Surface finish:** Pickled in immersion bath. Sand blasting and electrolytic polishing on request.
- Trough lengths:** 1,000 mm, 3,000 mm, fitting pieces as well as special lengths according to measuring-up
- Trough widths:** Standard 150 mm. However, all widths can be supplied depending on hydraulic requirement.
- Connection possibility:** Drainage nozzle DN 70 or DN 100. Alternatively connection to a pump sump.

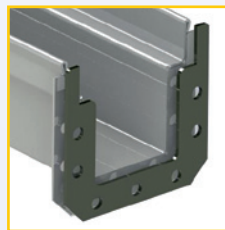


- Covers:** Standard grating mesh width 30/10, screw connected safe for traffic. Other mesh widths possible.

#### Connection elements:



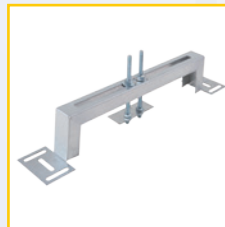
Connection shoes for sealing provided by the customer with suitable sealing material.



Connection flange with screws and chloride-resistant gasket.

Welding together of the trough joints on the construction site by our partner companies.

#### Installation systems:



In the case of existing recesses MVH installation assistance.



In the case of assembly before the concreting process, MVH adjustable feet with threaded bars for infinitely variable height adjustment

#### Type P1

Trough bottom part, length 1,000 mm	Article No. 11011001
Trough bottom part, length 3,000 mm	Article No. 11011002
Grating MW 30/10, length 500 mm	Article No. 11081002
Grating MW 30/10, length 1,000 mm	Article No. 11081001
Front wall (tightly welded on)	Article No. 17001001
Drainage nozzle DN 100	Article No. 17001050
Drainage nozzle DN 70	Article No. 17001051
Connection shoe	Article No. 17001081
Pair of flanges (incl. gasket)	Article No. 17001081