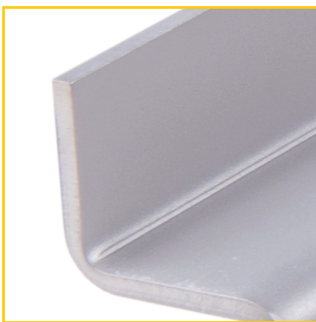


MVH industrial box drain **IK2**

water drainage technology for industry and workshops

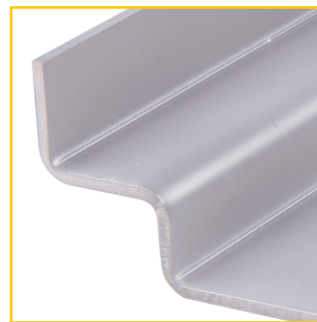
Industrial facilities present special requirements for water drainage systems. In many facilities, the channels need to handle large water volumes within very short periods, e.g. during cleaning operations. For these applications, MVH GmbH supplies box drains and covers with very high inlet cross-sections and backlog volumes. Since forklifts move large loads in industrial facilities, our channels and point drains are designed for these loads. Our water drainage systems can be adapted to your requirements with respect to material thicknesses, the floor anchoring mechanism, and also regarding the design of the various covering options. Our standard materials are stainless steel grades V2A (1.4301) or V4A (1.4571/1.4404). We can also use custom materials for extreme applications, such as exposure to chemicals.



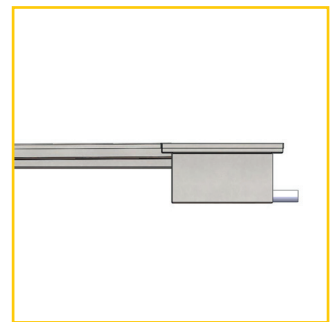
Material thicknesses of 3-4 mm ensure high strength



Heavy-duty wall anchors with 500 mm spacing for the best possible installation into the poured material



The widened grate contact surface ensures secure positioning of covers

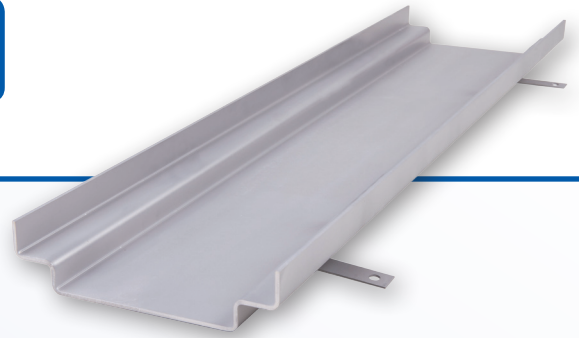


Water flow with boxed-in grade to the drain points

MVH industrial box drain

IK2

water drainage technology for industry and workshops



System features

Material: Stainless steel grades V2A (1.4301), V4A (1.4571 or 1.4404) and custom materials such as 1.4539 on request

Material thickness: 3-4 mm

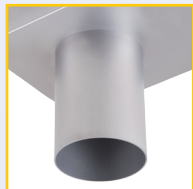
Finishes: Pickled in dip tanks. Bead-blasting and electrolytic polishing on request

Channel lengths: Overall lengths of channels based on requirements; individual section lengths: 3,000 mm.

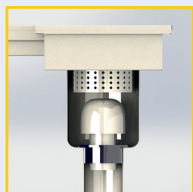
Channel widths: All widths, starting at 150 mm; available based on hydraulic requirements

Intrinsic grade: Box channels with boxed-in grade to the drains, depending on generated water volumes and grade conditions in the room to be drained

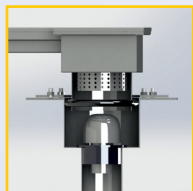
Connection options:



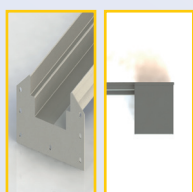
Integrated drain spouts DN 70 or DN 100, not incl. odor trap with vertical or horizontal orientation, other spout diameters on request.



Integrated, single-piece floor drains DN 70 and DN 100 with removable odor trap and dirt collector, see floor drain section for more information.

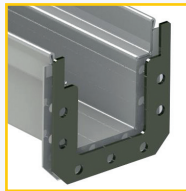


Integrated, two-piece floor drains DN 70 and DN 100 with adhesive flange or compression seal flange to connect the seal, floor drains with removable odor trap and dirt collector, see floor drain section for more information.



The box channel is connected to a pump sump at the installation site with an open front face with adapter flange; on MVH pump sumps, the box channel is welded directly to the pump sump.

Connection elements

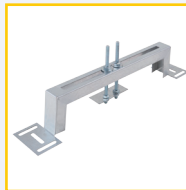


Adapter flange with screws and gasket; our partner contractors can also butt-weld the channels at the construction site.

Assembly systems:

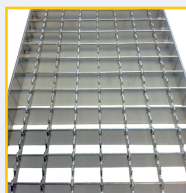


For installing before concrete is poured or the floor screed is applied by using MVH adjustable supports with threaded rods for continuously adjustable height.



On existing joints with MVH installation aids.

Covering options:



Grates with different mesh sizes and load classes.



Solid rod grates 20/8 mm for very high loads.



FGC grates made from fiberglass-reinforced plastics - heavy-duty and durable