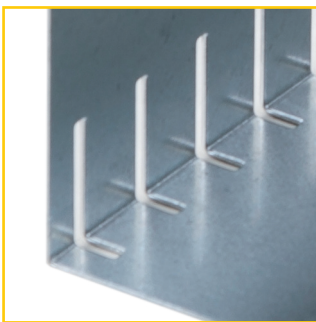
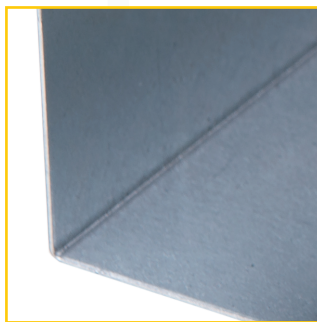


## Type **F1** MVH Channel Standard channel for facade water drainage



Surface side with water drainage slots. Fast water drainage into the seepage layer along the entire channel length

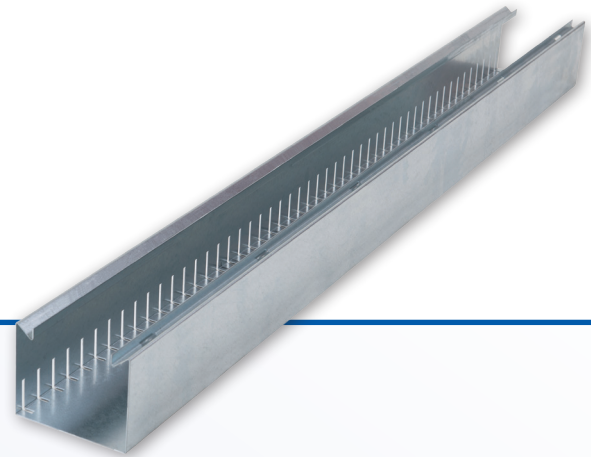


Closed facade side. Prevents water backflow in the direction of the facade and therefore waterlogging



Reinforced channel casing for increased strength and integrated grate support

## Type **F1** MVH Channel Standard channel for facade water drainage



### Systemmerkmale

**Material:** Steel, strip-galvanized. Other materials such as aluminum or stainless steel available as custom fabrications on request

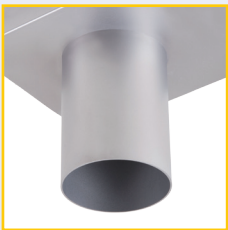
**Material thickness:** Standard 1.5 mm

**Channel lengths:** 500 mm, 1,000 mm, and 3,000 mm  
Fitted sections and custom lengths to on-site measurement possible.

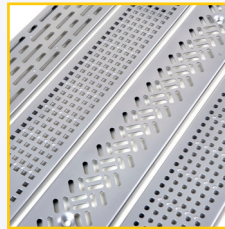
**Channel widths:** standard 100 mm and 130 mm  
However, all widths are available as custom fabrications to match the hydraulic requirements.

**Channel heights:** standard 50 mm and 80 mm  
Custom heights (30 - 130 mm) available on request.

**Connection options:** Drainage flange DN 7- or DN 100

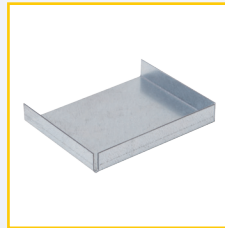


#### Covers:



Perforated grates with various hole pattern, e.g. round, square, or diamond hole patterns. Other hole shapes available on request (crests or corporate logos).

#### Connection elements: sleeves



Push-on endcaps to terminate the channel run



Side channel installation height: 300 mm, Installed width: 100 mm

#### Type F1 channels, material: Galvanized

Installed width	Installed height	Installed length	Part number
100 mm	50 mm	500 mm	140100011
100 mm	50 mm	1,000 mm	140100012
100 mm	50 mm	3,000 mm	140100013
100 mm	80 mm	500 mm	140100014
100 mm	80 mm	1,000 mm	140100015
100 mm	80 mm	3,000 mm	140100016
130 mm	50 mm	500 mm	140100017
130 mm	50 mm	1,000 mm	140100018
130 mm	50 mm	3,000 mm	140100019
130 mm	80 mm	500 mm	140100020
130 mm	80 mm	1,000 mm	140100021
130 mm	80 mm	3,000 mm	140100022

#### Covers Type F1 channels, material: Galvanized steel, screwless

Description	Version	Channel width	length	Part number
Perforated grate	Round hole Ø 8 mm	100 mm	500 mm	14080010
Perforated grate	Round hole Ø 8 mm	100 mm	1,000 mm	14080011
Perforated grate	Square hole pattern	100 mm	500 mm	14080012
Perforated grate	Square hole pattern	100 mm	1,000 mm	14080013
Perforated grate	Diamond hole pattern	100 mm	500 mm	14080014
Perforated grate	Diamond hole pattern	100 mm	1,000 mm	14080015
Perforated grate	Round hole Ø 8 mm	130 mm	500 mm	14080020
Perforated grate	Round hole Ø 8 mm	130 mm	1,000 mm	14080021
Perforated grate	Square hole pattern	130 mm	500 mm	14080022
Perforated grate	Square hole pattern	130 mm	1,000 mm	14080023
Perforated grate	Diamond hole pattern	130 mm	500 mm	14080024
Perforated grate	Diamond hole pattern	130 mm	1,000 mm	14080025

#### Accessories for F1 channels

Description	Channel width	Channel height	Material	Part number
Cap	100 mm	50 mm	galvanized	14083000
Cap	100 mm	80 mm	galvanized	14083001
Cap	130 mm	50 mm	galvanized	14083004
Cap	130 mm	80 mm	galvanized	14083005

#### Side channels 100 x 30 mm

Material	Length	Part number
Galvanized steel	2,000 mm	14083008